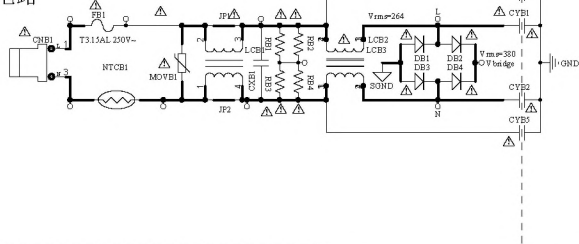
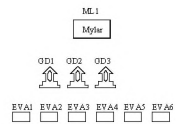


EMI电路



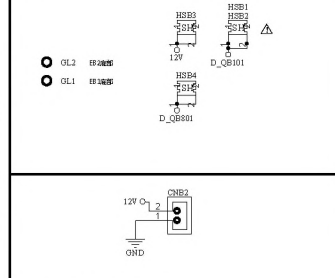
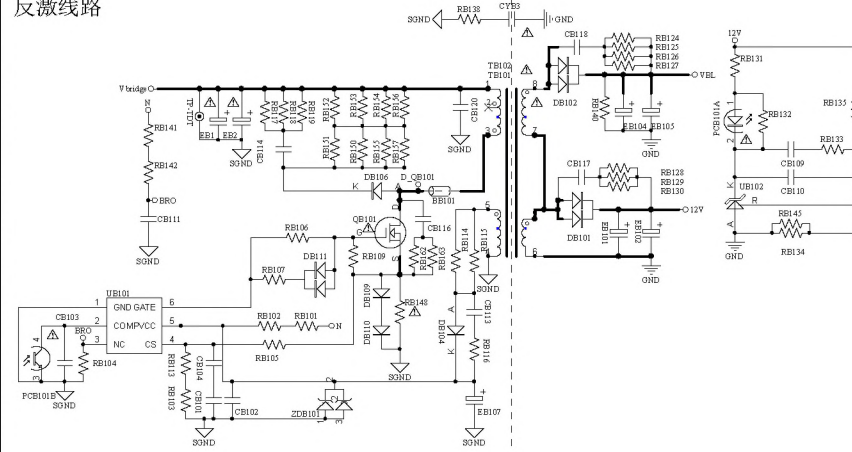
辅料及结构件等



原理图中未体现的辅料及特殊生产工艺

工艺	位号

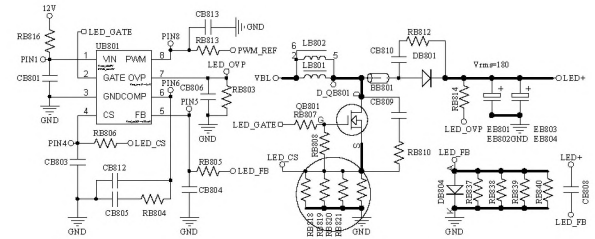
反激线路



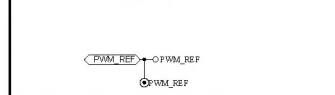
Design Note:

Layout Note:

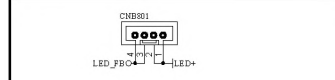
恒流线路



与TV端连接网络



辅料及结构件等



选择背光器件时请确认背光器件的规格参数，且MOS的S极连接LED串，不可动封装

Layout Note:

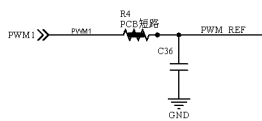
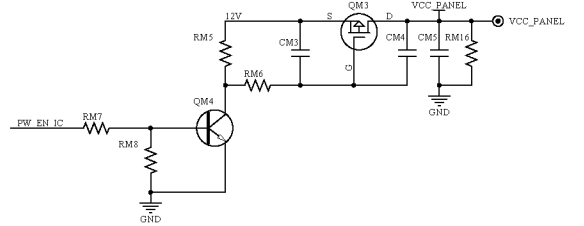
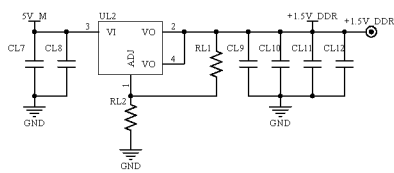
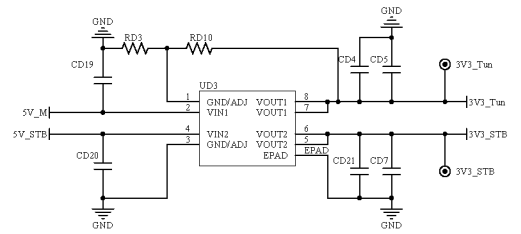
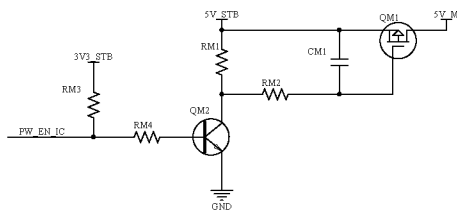
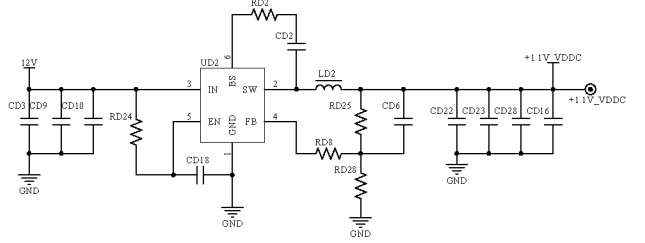
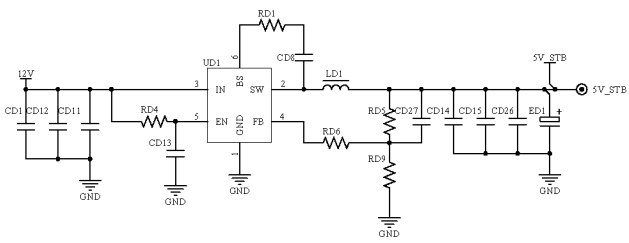
1. MOS的漏极电阻电路的封装要短而C的封装要长
2. LED的接点先选择焊点接到恒流电阻的焊盘上
3. MOS的封装引脚与恒流电阻的封装引脚对齐，且MOS的S极连接LED串
4. LED的4、5、6、7脚焊接要远离动态区域，如MOS的D极，驱动器件等

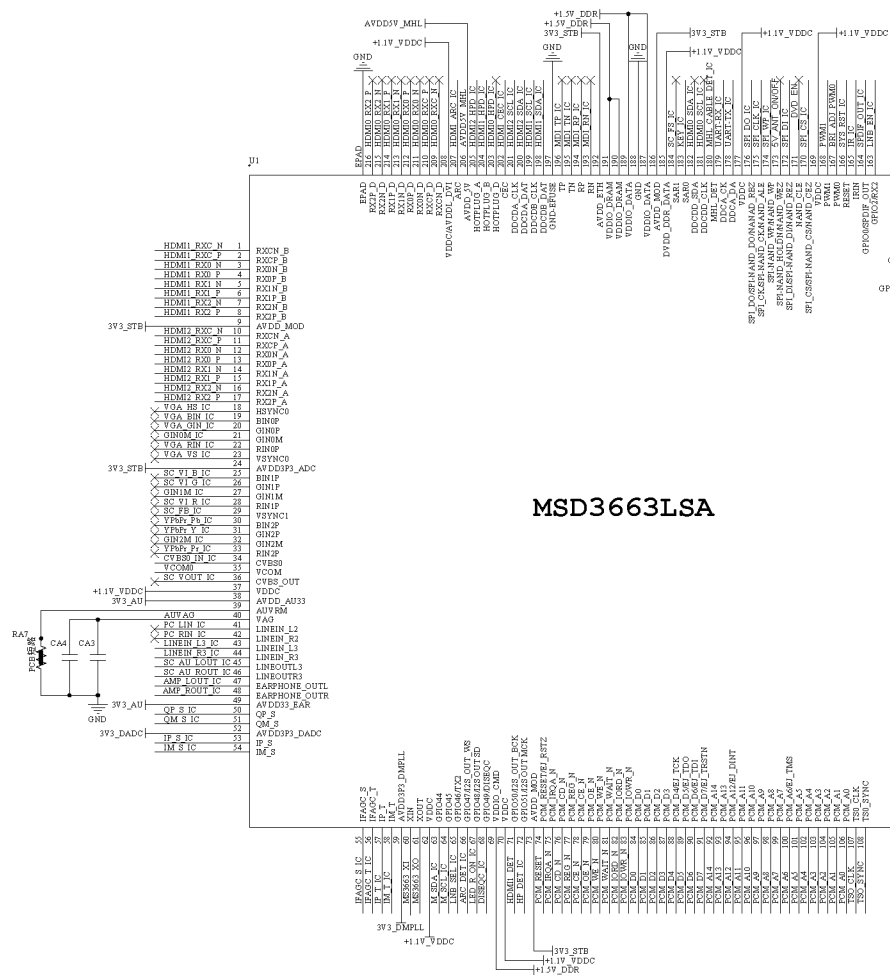
Design Note:

1. 8888建议慎用3mm

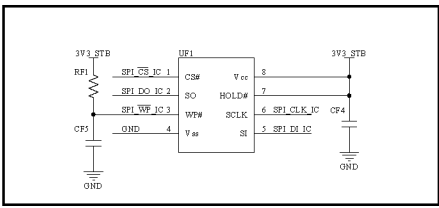
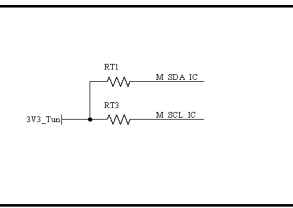
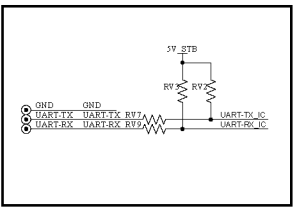
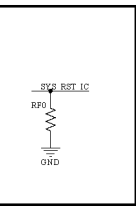
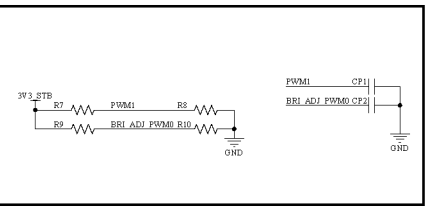
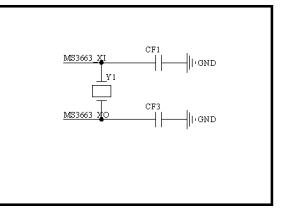
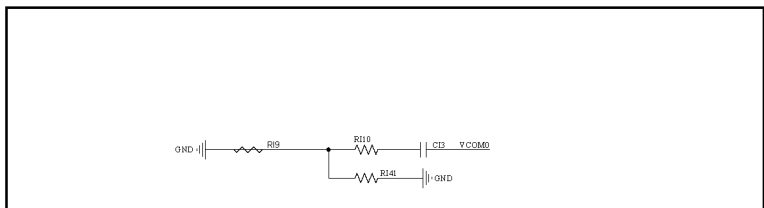
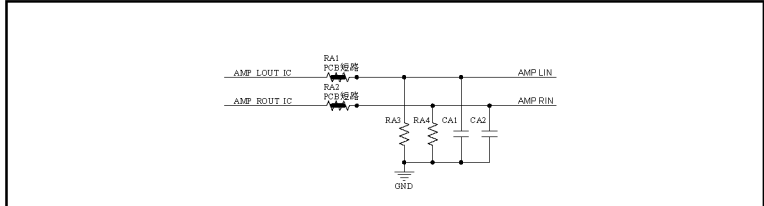
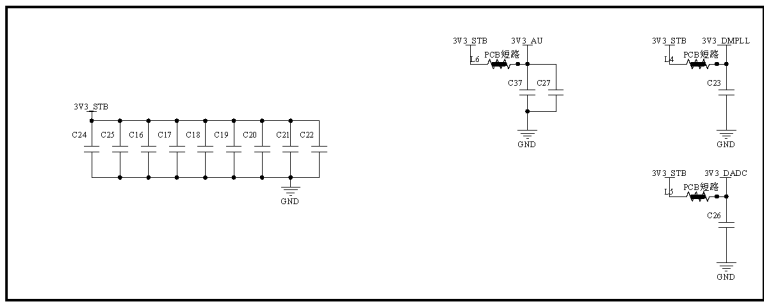
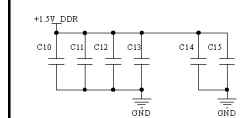
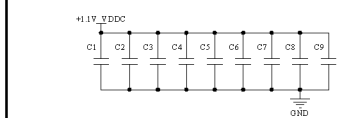
Model Name:	TP300X20X A20X	VERSION:	v1.0
DRAWN:	XXX	DATE:	2015-0X-XX
CHKD:	XXX	DATE:	2015-0X-XX

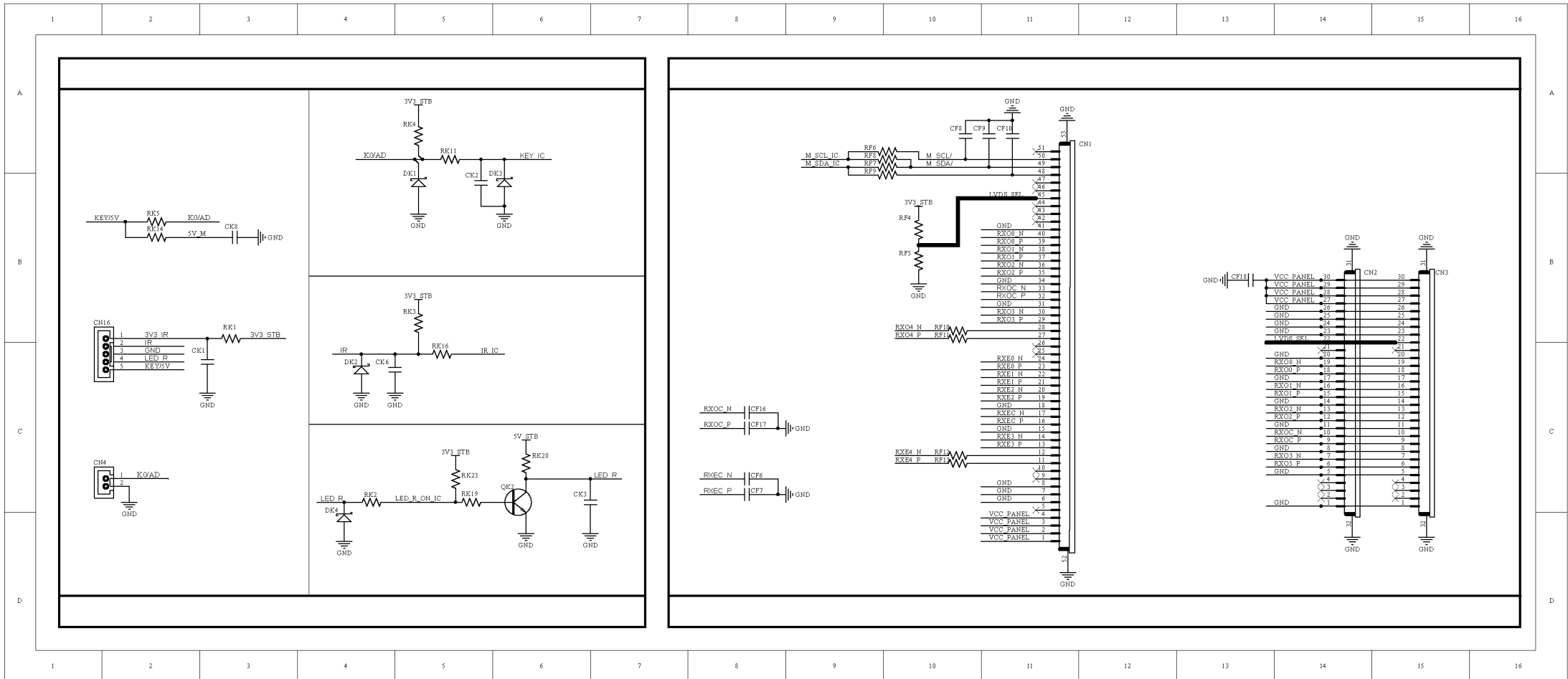


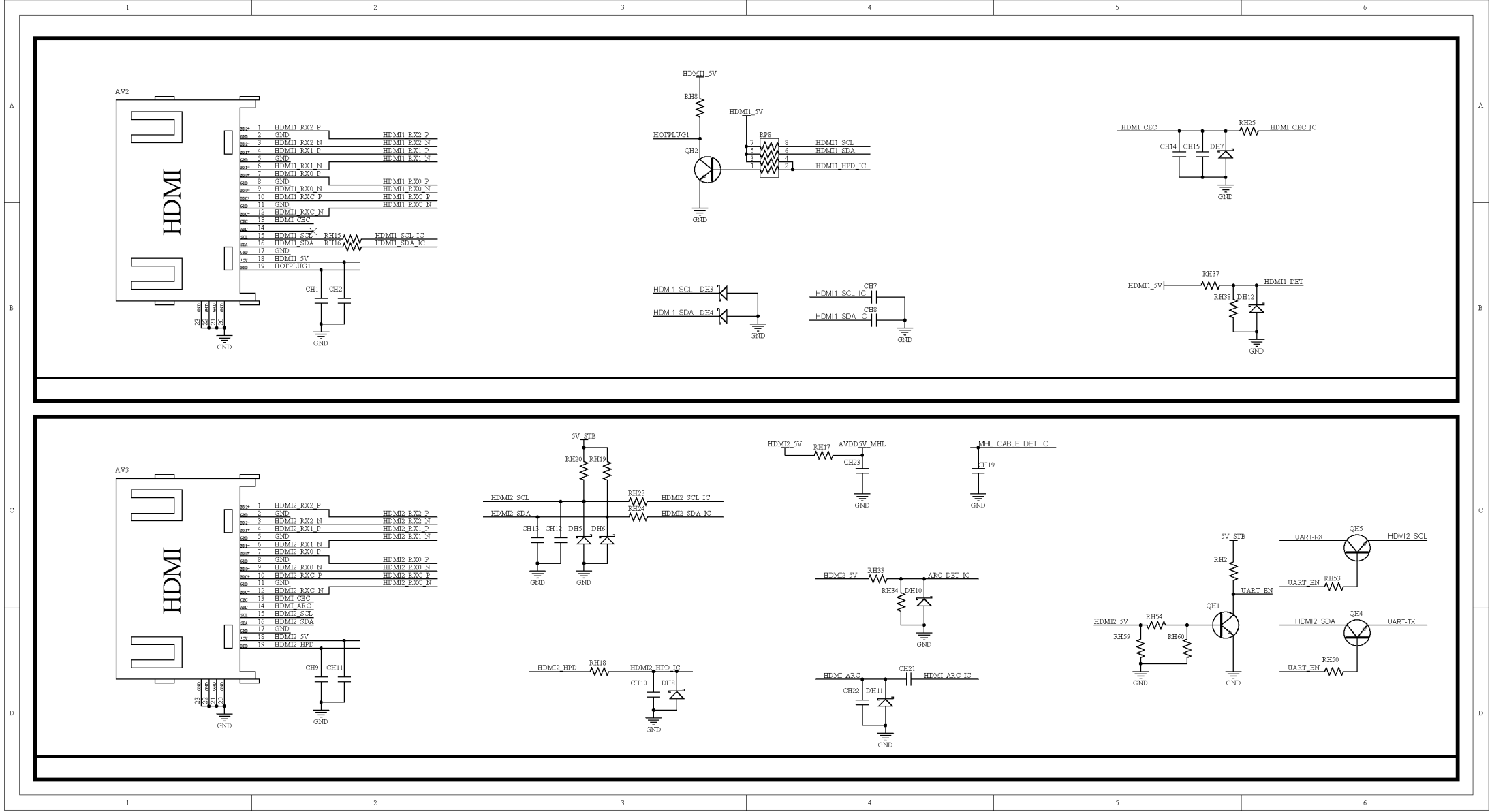




MSD3663LSA

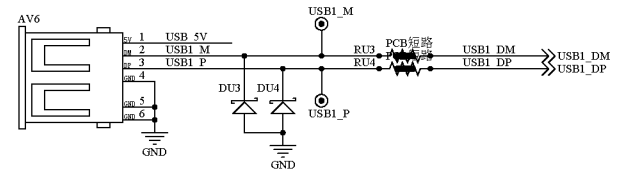
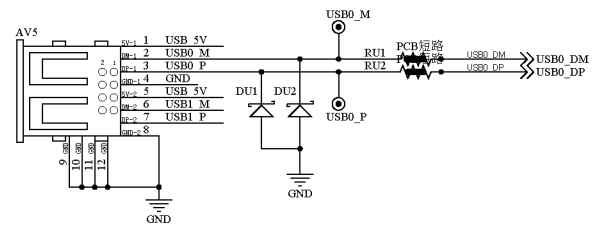
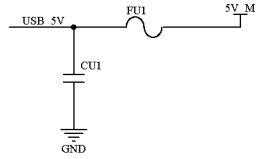






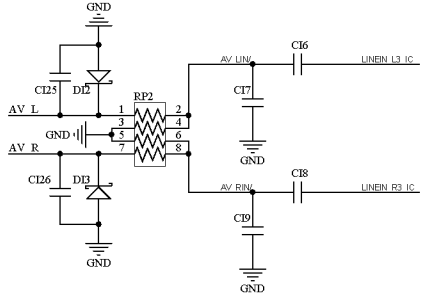
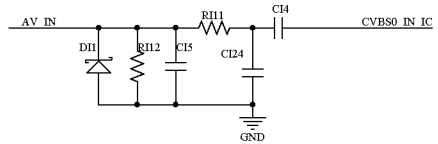
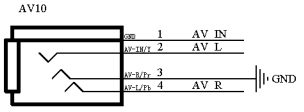
A

A



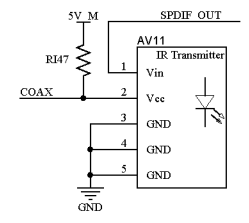
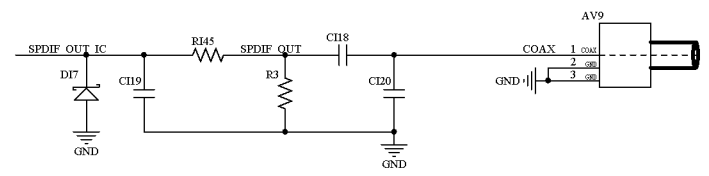
B

B



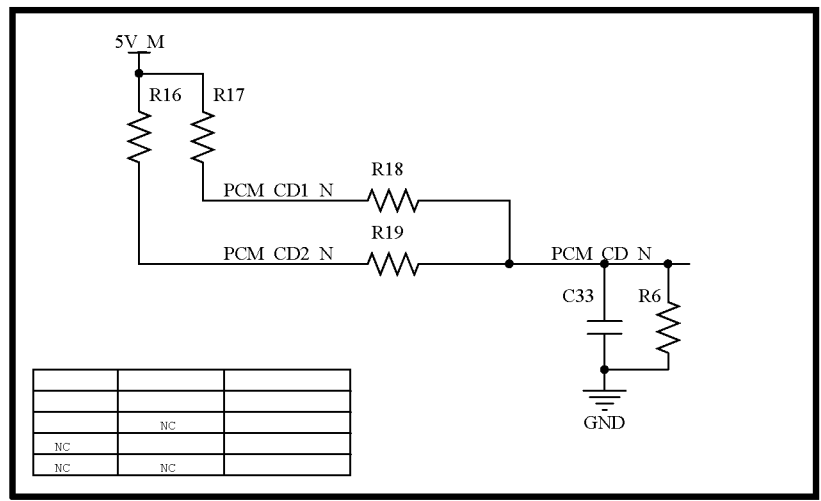
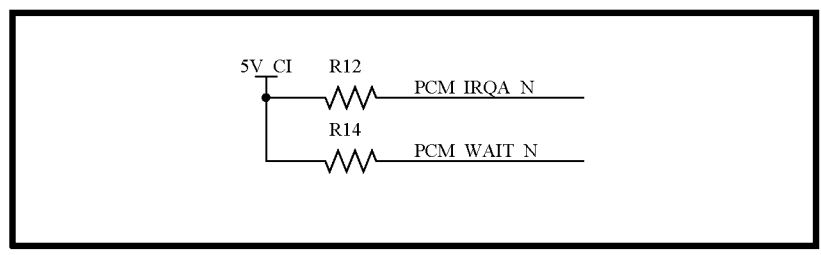
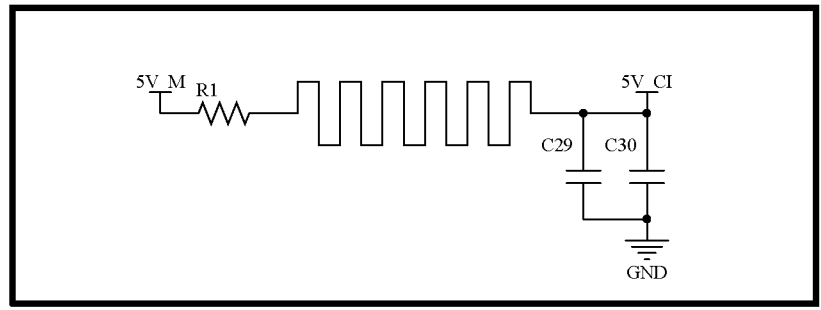
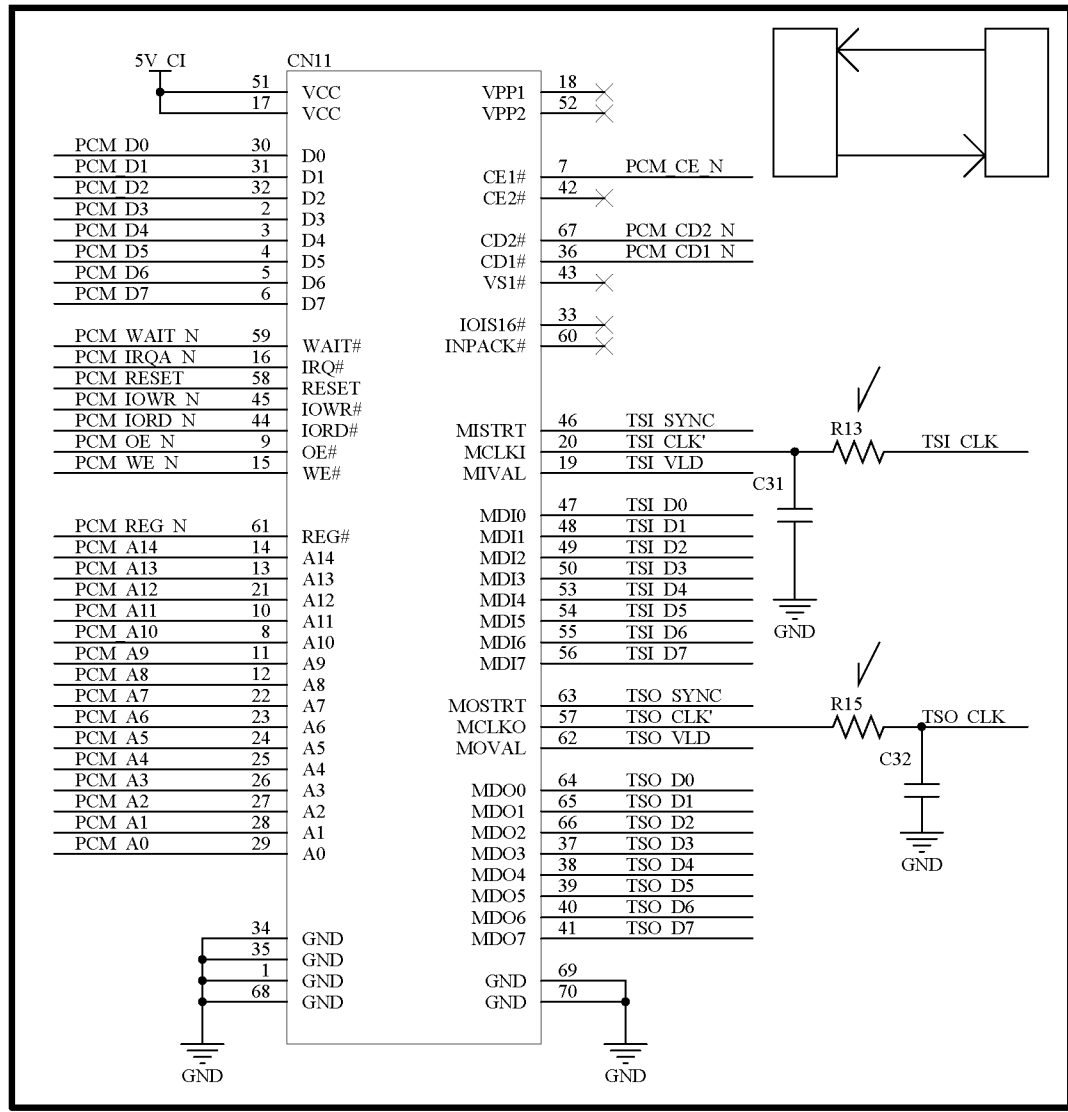
C

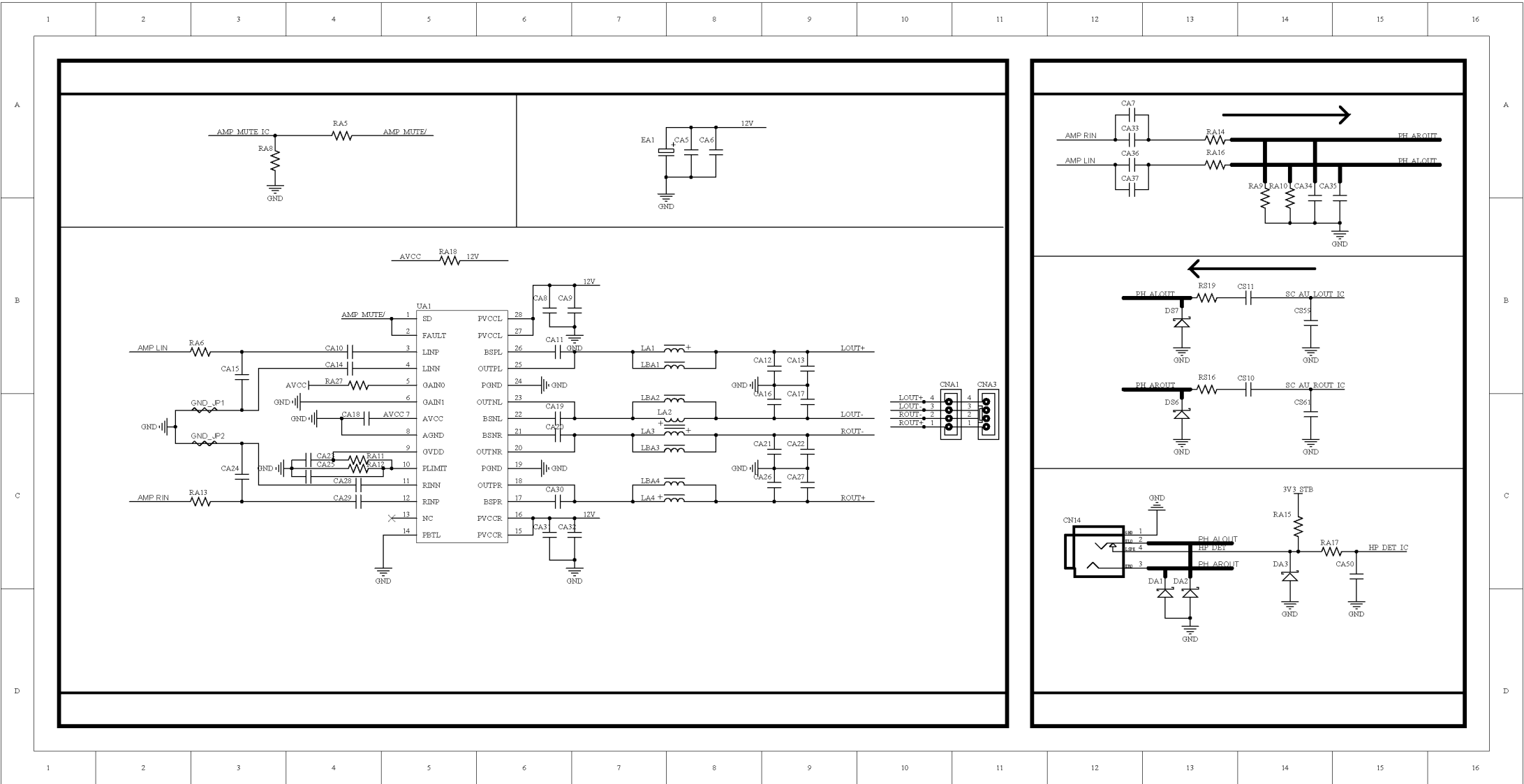
C



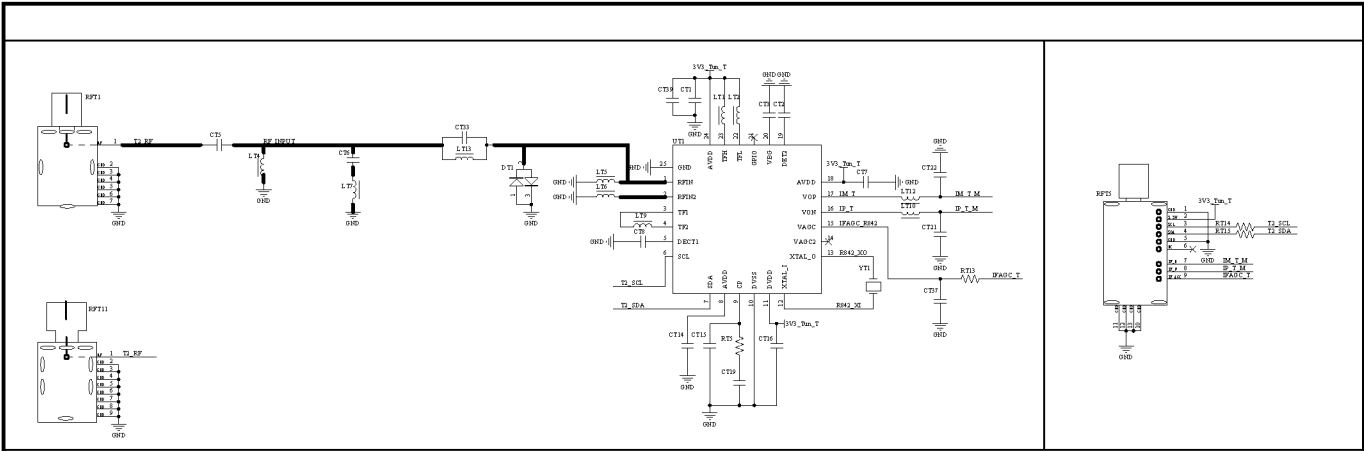
D

D



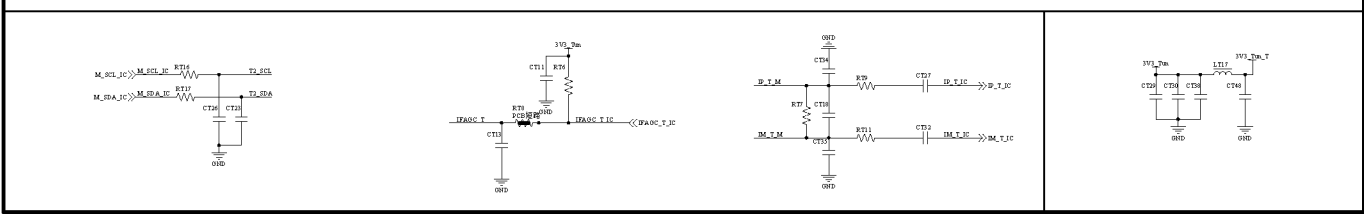


A



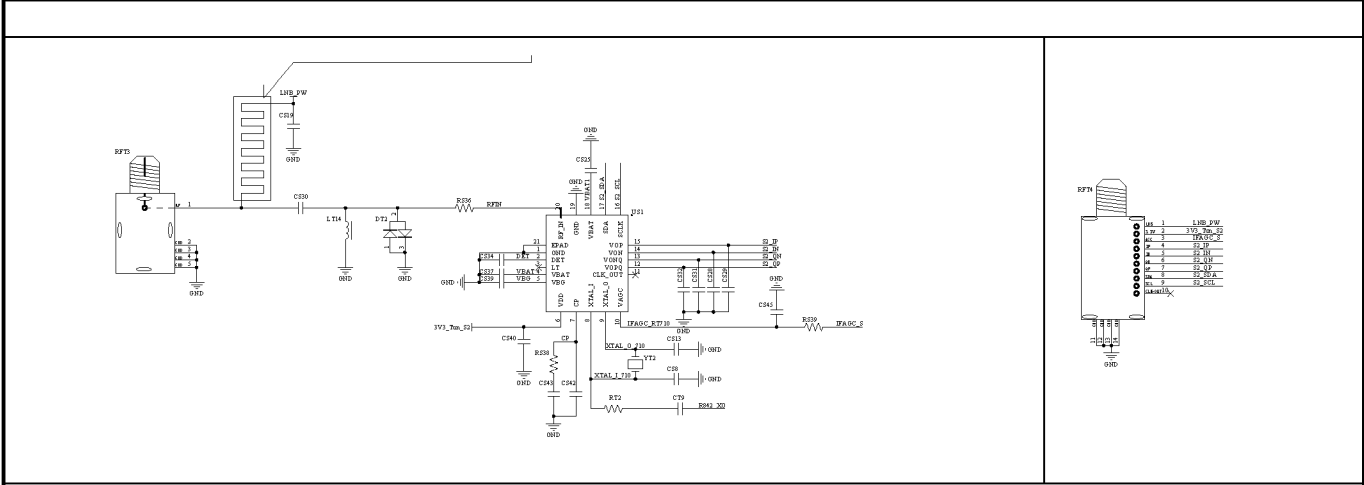
A

B



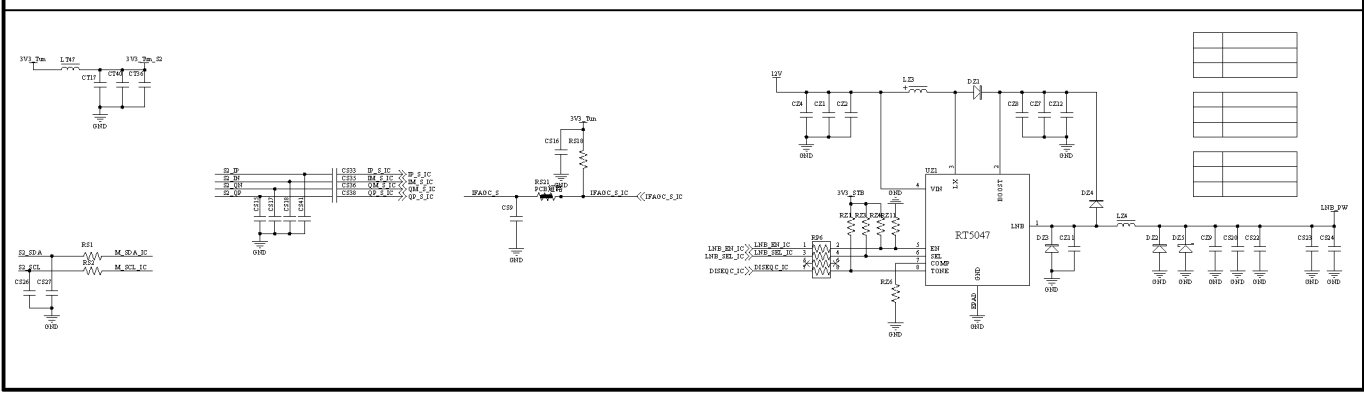
B

C



C

D



D